

THE SINGLETARY SUN

THE VOICE OF THE LAKE SINGLETARY WATERSHED ASSOCIATION

“Dedicated to the preservation and protection of Lake Singletary and its watershed”

A NOTE FROM THE EDITOR

It has finally arrived! Spring is here, and we are that much closer to yet another incredible lake season here in our little slice of paradise. It seems Mother Nature decided to remind us what a New England winter can be, which gave us several weeks of good thick ice coverage and a great weed control hard freeze period. Followed by several weeks of Spring rains, the lake is already coming up quickly and we should be out on the water in no time!

This year promises to be a great season. I hope everyone will join us at the boat ramp on April 26th for the Earth Day cleanup to kick off the season. From there, we have the annual 4th of July boat parade, the Raft Party in August, and the annual golf outing in the Fall. Not to mention all the weekends and evening jaunts that just make living on Lake Singletary a singular pleasure.

As always, I have enjoyed pulling together this season’s Newsletter – a big shout out to all of our photo submitters on Facebook – if you’ve not yet joined the FaceBook group I highly recommend you check it out as the pictures, discussions and general lake community truly come to life.

And of course, I am always looking for story contributions – please shoot me a note if you have a cool memory, a great story about the lake, or just want to share a quick anecdote about how Lake Singletary holds a place in your heart – I am sure others would love to hear it!



Have a great Summer, and please be safe out there!
Jim Hull – LSWA Newsletter Editor

WHAT'S INSIDE

Calendar of Events	Page 2	Get Ready for the Season	Page 10
Lake Chemistry Data	Page 3	Board Members and Contacts	Page 11
‘Off Season’ on the Lake	Page 4	Mass Boating Rules	Page 12
The Ice Derby	Page 7		

2025 CALENDAR OF EVENTS

Earth Day Cleanup	Saturday, April 26, 2025	9:00 AM Meet at the boat ramp
Boat Parade	Thursday, July 4th	Meet at the Southwest end of the lake for an 8:15pm parade start
Rafting Party	Saturday, August 2nd	4:00 PM Gull Island
Annual Meeting Open to all Members	Wednesday, August 27th	7:00 PM St. Mark's Church
Annual Golf and Dinner Outing	Sep/Oc – Date TBD	Time TBD

Want to keep up to date on events, meet new lake friends or just enjoy the beautiful photographs of our lake?

JOIN US ON FACEBOOK!
[Click HERE to join the FaceBook Group](#)

Any LSWA Member that is current on dues can join – we are already at 136 members and growing every week. Join up, stay connected and keep in touch.



Did you know?

Using the wrong fertilizer can be a significant contributor to Algae Blooms

Algae require phosphorous and nitrogen to grow. Adding either of these to the lake can cause algae growth to take off, so a good way to limit algae growth in the lake is to limit the nitrogen and phosphorous that gets into the water.

You can help! Minimizing the phosphorous content of your fertilizer, using buffer plants between your yard and the lake, and even doing several small applications instead of a couple of large ones will help the nutrients get absorbed by your yard, and stay out of the lake

One thing we sometimes see are 'fish kills' when the dissolved oxygen gets too low in the lake and many small fish like bluegills and pumpkinseeds die off in large numbers. Avoiding algae blooms helps us keep the lake clearer, but you might just save some fish along the way!

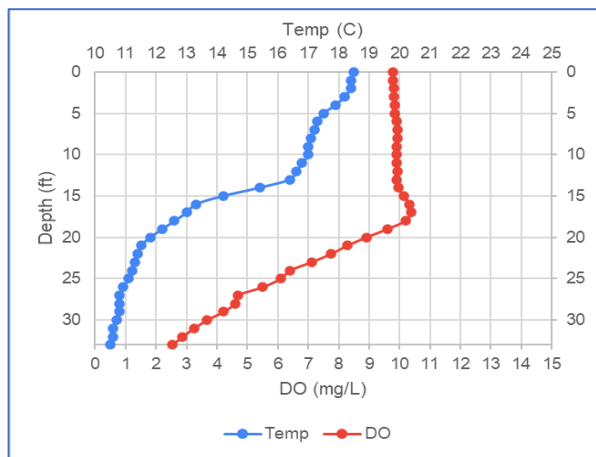


HOW DO WE TRACK 'DISSOLVED OXYGEN'?

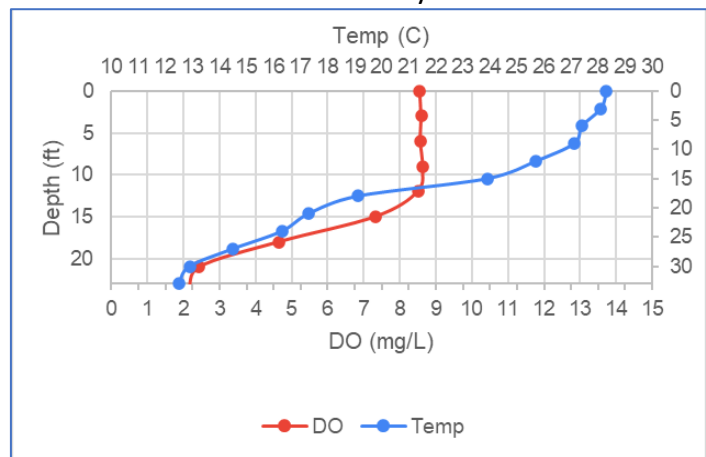
Dissolved Oxygen – Dissolved oxygen (DO) is the amount of oxygen gas dissolved in the water column. Lakes and ponds impacted by heavy sediment loads may experience low DO levels since the increased turbidity (cloudiness) caused by suspended particles can restrict light penetration and limit photosynthesis. The breakdown of organic matter (i.e., aquatic plants, leaf litter, manure, fish waste) also consumes large amounts of oxygen from the water column. Fish require oxygen for respiration, and become stressed at levels less than 5 mg/L. Colder water is able to hold a greater concentration of oxygen than warmer water, and waterbodies may become naturally stressed with low dissolved oxygen levels during the warmer months.

<2 mg/L likely toxicity with sufficient exposure duration; <5 stressful to many aquatic organisms; ≥5 able to support most fish and invertebrates

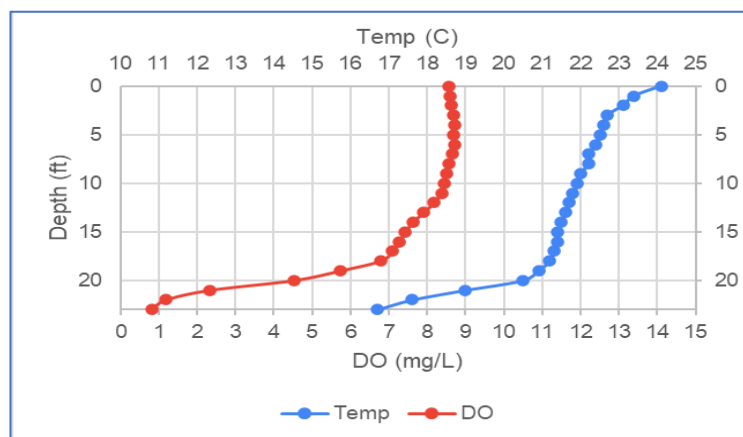
DO Profile – May 2024



DO Profile – July 2024

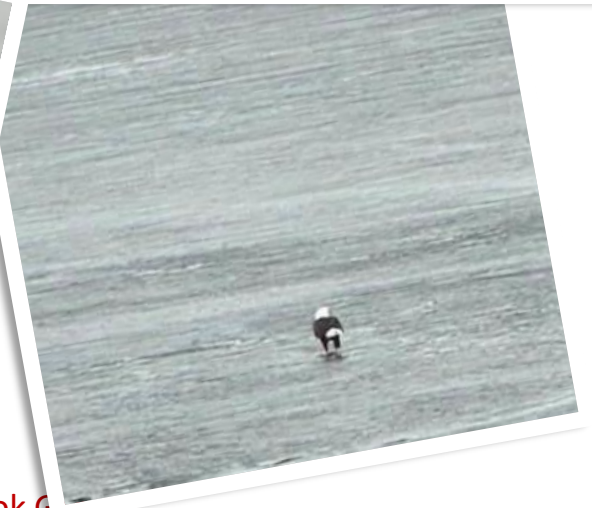
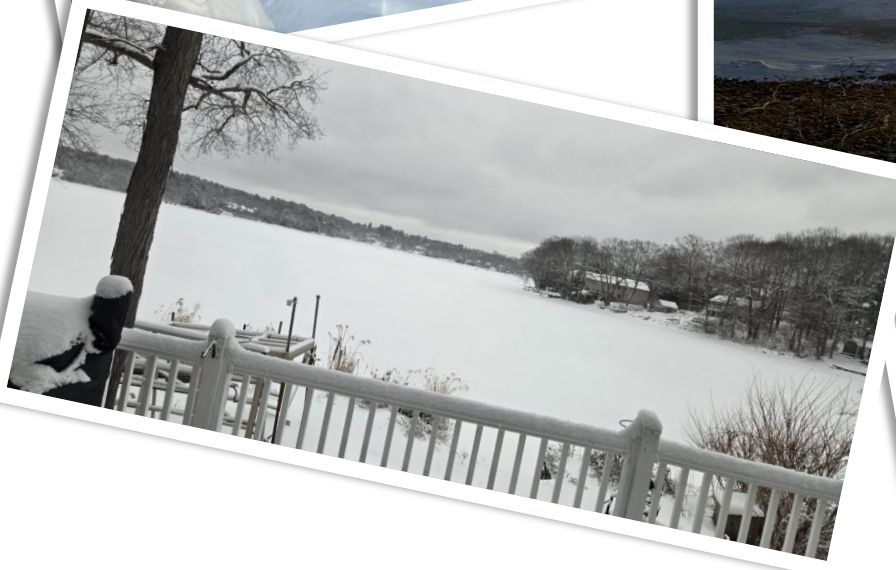


DO Profile – September 2024



"OFF SEASON" ON THE LAKE

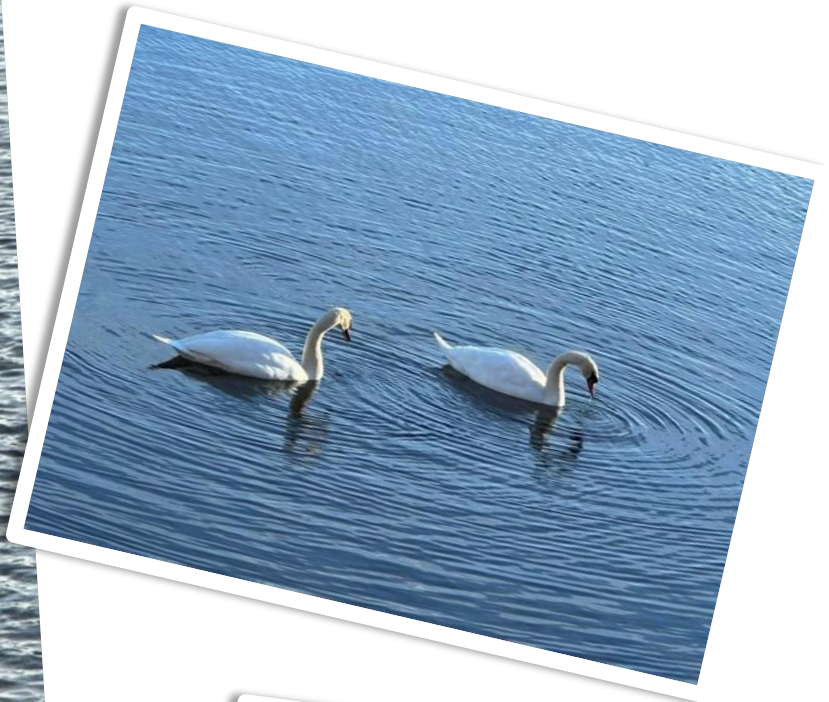
Although Summer is the prime time for life on our lake, a lot of fun and beauty is to be had in the 'off season'. And this year's hard freeze made for some great fishing, snowmobiling, snowshoeing and general winter fun



See more photos in the Facebook Group:

Spring 2025

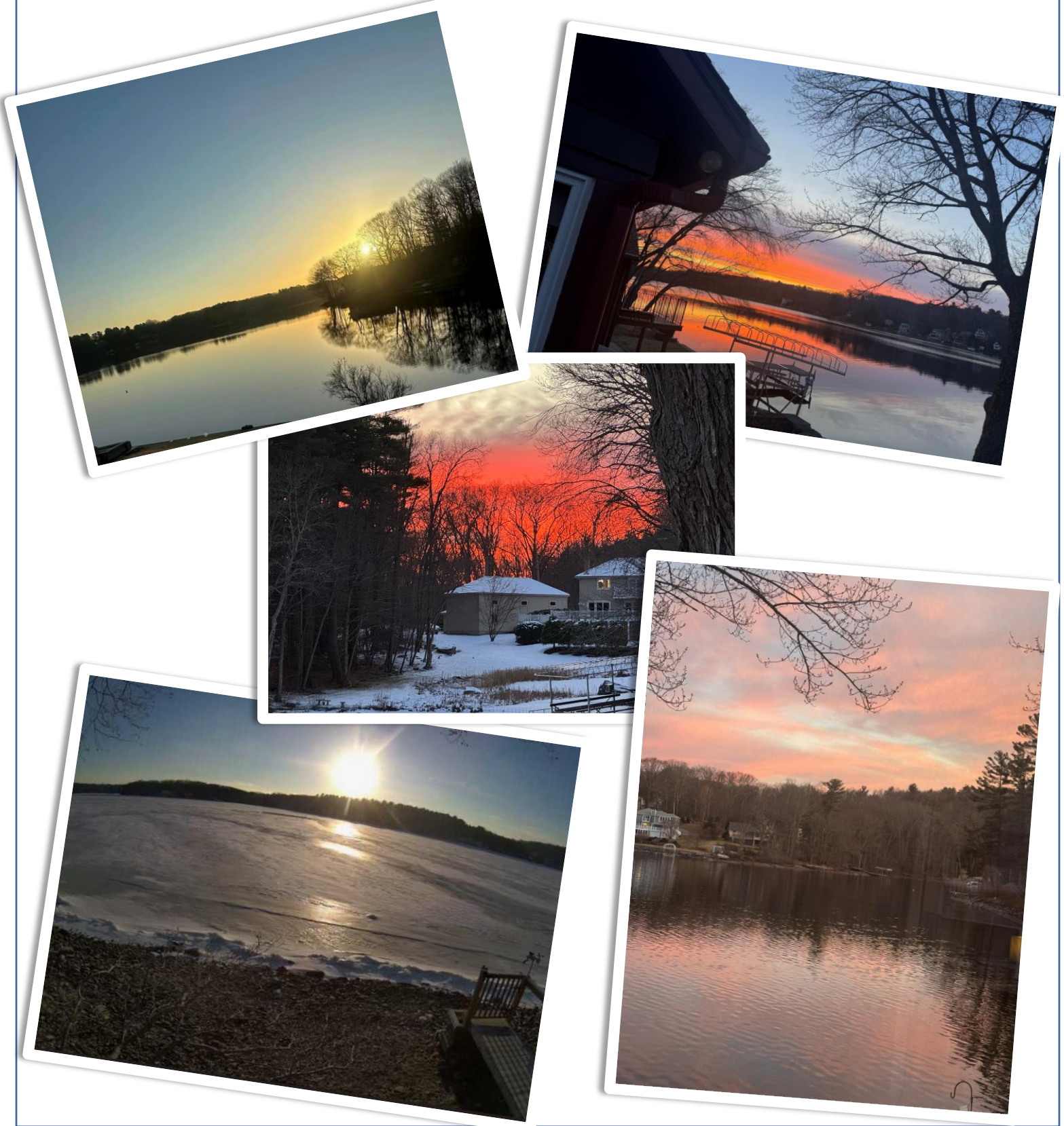
"OFF SEASON" ON THE LAKE



Singletery Sun - P.O. Box 332 - Sutton, Ma 01590 - www.lakesingletery.org
Join us on Facebook!

Spring 2025

"OFF SEASON" ON THE LAKE



Singletary Sun - P.O. Box 332 - Sutton, Ma 01590 - www.lakesingletary.org
Join us on Facebook!

"OFF SEASON" ON THE LAKE

The 38th annual Ice Derby, hosted by Millbury Fire Engine 2, was a spectacular success. Join us again next year, weather permitting



38th ANNUAL LAKE SINGLETARY ICE FISHING DERBY TAKE A KID FISHING

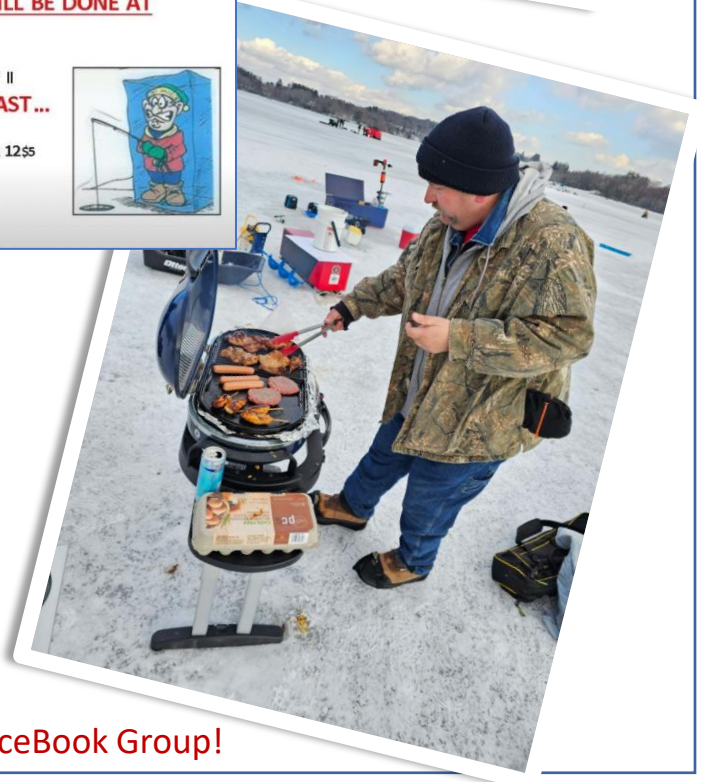
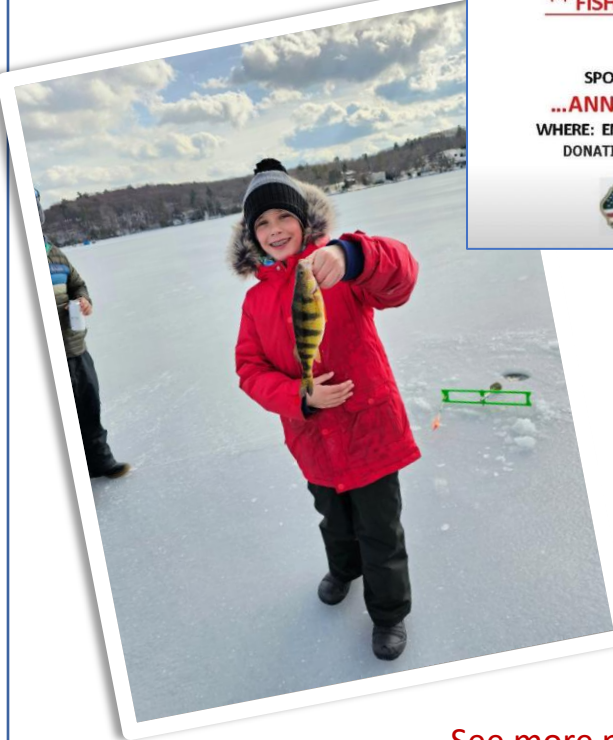
DATE: January 26, 2025
Rain Date: February 16, 2025
TIME: 7AM TO 3PM

DONATION: ADULTS \$25
(12 AND UNDER) CHILDREN \$10

PRIZES: 13 and over will be cash based on entries, Children prizes 12 and under 4 biggest fish. \$1 / \$10 Raffles

**** FISHING DERBY SIGN UP WILL BE DONE AT
ENG. CO.II****

SPONSORED BY ENGINE COMPANY II
...ANNUAL PANCAKE BREAKFAST...
WHERE: ENG. CO. II TIME: 6am - 11am
DONATION: ADULTS \$7 / SENIORS \$6 / UNDER 12\$5



See more photos in the FaceBook Group!

"OFF SEASON" ON THE LAKE



Spring 2025

"OFF SEASON" ON THE LAKE



Singletary Sun - P.O. Box 332 - Sutton, Ma 01590 - www.lakesingletary.org
Join us on Facebook!

LET'S GET READY FOR THE SEASON!

**A few Safety Steps now can mean the difference
when it matters!**

Practice Boating Safety
Review the Mass boating guidelines
and ensure your boat is in tip-top
shape for the season

Learn CPR and Basic First Aid
Courses are available through the
Red Cross or the Worcester YMCA –
you never know when a neighbor
may need your help

Supervise Children around water
Ensuring children know how to swim
and use life vests can help prevent an
emergency later on

Know your Limits
Swim with a friend, avoid water you
don't know, and always keep your
wits about you

Stay off the Moors
Okay, this was just a test to see who
reads this far and has seen
"American Werewolf in London"

LSWA BOARD MEMBERS

President	Paul Kawolis	paul@lindersinc.com	508-865-0741
Vice President	Lynn Whalen	gileswhale@aol.com	508-865-0646
Treasurer	John Charest	johcha01@gmail.com	508-553-9024
Secretary	Mona Kawolis	mona1223@aol.com	508-865-0741
	Linda Carlson	lbcpgc@gmail.com	508-769-8038
	Matt Connors	Drmartycon@gmail.com	774-278-0487
	Jim Hull	jhull444@gmail.com	508-958-4672
	Wayne Junnila	wjunnila22@gmail.com	508-826-1054
	Bob Kimball	rkimballdc@aol.com	202-234-9242
	Sean Kloczkowski	skloczkowski@gmail.com	401-787-5750
	Garth Maynard	garth.maynard@verizon.net	<Contact LSWA>
	Bob "Bart" McCracken	bartzoski@gmail.com	774-239-7834
	Dan McNamara	danielmcnamara1960@yahoo.com	508-865-1016
	Jim Nash	jnash5704@hotmail.com	508-735-9929
	Lindsey Nash	lfontan@gmail.com	508-981-6022
	Karen Rapp	karenprapp@gmail.com	508-634-8992
	Tom Wotjkowski	t_c_wojtkowski@hotmail.com	508-415-1669

MASSACHUSETTS BOATING RULES

Required Equipment Checklist



	Boats Less Than 16' & PWC (Class A) ¹²	Boats 16' to Less Than 26' (Class 1)	Boats 26' to Less Than 40' (Class 2)	Boats 40' to Less Than 65' (Class 3)	Non-Motorized: Any Length
Vessel Registration on Board ¹	✓	✓	✓	✓	n/a
Validation Decal Displayed ¹	✓	✓	✓	✓	n/a
Registration Numbers ¹	✓	✓	✓	✓	n/a
Boating Safety Certificate ²	✓	✓	✓	✓	n/a
Wearable PFDs: Type I, II, or III (one per person)	✓ ³	✓ ³	✓ ³	✓ ³	✓ ¹⁰
Throwable PFD: Type IV	✓ ⁹	✓	✓	✓	
Fire Extinguisher(s) ⁴	1 B-I	1 B-I	2 B-I or 1 B-II	3 B-I	n/a
Backfire Flame Arrestor ⁵	✓	✓	✓	✓	
Ventilation System	✓	✓	✓	✓	
Muffler	✓	✓	✓	✓	
Horn, Whistle, or Bell	✓	✓	✓ ⁶	✓ ⁶	✓ ¹³
Daytime VDSs		✓	✓	✓	
Nighttime VDSs ⁷	✓	✓	✓	✓	✓
Navigation Lights ⁸	✓ ¹²	✓	✓	✓	13, 14
Anchor, Line, and Manual Bailer	✓ ⁹	✓	✓	✓	
Boarding Ladder ¹¹	✓ ¹²	✓	✓	✓	n/a

For footnotes and additional information, please visit:

<https://wow.uscgaux.info/content.php?unit=013-11-02&category=ma-safety-checklist>

MASSACHUSETTS BOATING RULES

Minimum Age Restrictions: No person under 12 years of age may operate a motorboat, unless accompanied on-board and directly supervised by a competent person 18 years of age or older. Personal watercraft (PWC) users must still be at least 16 years of age in order to operate, with no exceptions.

Safety Education Certification: Youth who are between 12 and 15 years of age must complete an approved basic boating course in order to operate a motorboat without adult supervision. Upon successful completion of such a course, students are issued a state "boating safety certificate" which must be in the possession of the certified operator when underway. Personal watercraft users who are 16 or 17 years of age must also complete such a boating course. Youth less than 16 years of age are not allowed to operate personal watercraft.

Accident Reporting: The operator of any motorboat involved in an accident which results in personal injury, death, or property damage (over \$500) shall immediately notify the MA Environmental Police and file the appropriate accident report within the required time frame. (2 days-fatality; 5 days - all other accidents)

Safety Equipment: Most of the state equipment carriage requirements are similar to federal laws. This primary list includes life preservers, fire extinguishers, signaling devices, visual distress signals, and navigation lights. In Massachusetts, life preservers are required to be worn by: (1) youth less than 12 years of age (2) personal watercraft users (3) waterskiers (4) canoeists/kayakers from September 15 - May 15. A boat owner or a boat's operator is responsible to ensure that passengers on-board wear life preservers as required. Additionally, the state requires that all motorboats (with the exception of personal watercraft) be equipped with an anchor, manual bailer, and line. A paddle or an oar is required on boats less than 16 feet in length. Motorboats towing skiers must also be equipped with a boarding ladder. Registration and numbering of all boats powered by machinery is required.

Have a Memory you want to share? Email JHull444@Gmail.com

MASSACHUSETTS BOATING RULES

Prohibited Operation: The following types of operation are extremely unsafe and are prohibited:

- Operating any vessel under the influence of alcohol or drugs. A blood alcohol concentration of .08 BAC is the current standard of intoxication in Massachusetts.
- Operating a motorboat within 150 feet of a swimming area, whether public or private.
- Operating at an excessive speed considering weather conditions, boat traffic, and other hazards.
- For inland waters, operating at a speed greater than 45 mph is considered negligent operation.
- Operating a motorboat without properly working lights.
- Operating a motorboat during the nighttime while towing waterskiers, tubers, etc.
- Operating at greater than headway speed (6 mph or less) within 150 feet of a swimmer, waterskier, mooring area, marina, boat launch, or when the operator's vision is obscured in any way.
- Operating in an overloaded condition (carrying total weight that exceeds capacity plate recommendations or is excessive considering water conditions)
- Operating with passengers on the bow, gunwales, or any other place where there may be a chance of falling overboard.

Personal Watercraft Operation:

Personal watercraft (PWC) are considered motorboats by law and must comply with all boating laws and navigation rules, including the speed and operation provisions above. Additionally, PWC users must adhere to state regulations specific to personal watercraft operation including:

- Wear an approved life jacket (PFD) at all times (operator and passengers).
- Attach the safety lanyard to the operator and the cutoff/kill switch.
- Always operate at slow, no-wake speed (6 mph or less) within 150 feet of a swimmer, the shoreline, waterskiers, a boat launch, a raft or float or a moored or docked boat.

You must not operate a PWC:

- If less than 16 years old;
- Under the influence of alcohol;
- Between sunset and sunrise;
- At high speed in congested areas;
- On waters under 75 acres;
- While towing persons on skis, tubes, etc.

<https://www.mass.gov/service-details/massachusetts-boating-law-summary>